

EUREKA 89 EVENTS
Dinner Menu

MENU OPTIONS

4 Course - \$135 per person
(canapés, entrée, main course and dessert OR cheese)
5 Course - \$145 per person
(canapés, entrée, main course, dessert and cheese)

Choice menu available for groups of 50 or below
(surcharge applicable)

All dietary requirements can be catered for upon request

CANAPÉS ON ARRIVAL

Chef's selection, 2 items per person

Please choose two items in each course below to be served alternately.

House made bread and mixed leaf salad provided to tables

ENTRÉE

Spiced yellowfin tuna, nashi pear, fennel, ginger dashi
Lamb shoulder, pickled kohlrabi, onion, micro cress
Japanese scallops, braised leeks, apple, hazelnut
Mushroom risotto, enoki crisp, truffle oil, parsley
Octopus, wakame, miso emulsion, whey
Quail, sweetcorn, cauliflower, amaranth

MAIN

John Dory, braised fennel, baby vegetables, verjuice
Beef fillet & cheek, potato, onion, heirloom carrots
Chicken breast, pumpkin cream, edamame, grilled zucchini
Lamb rump, celeriac rosti, broad beans, roasted parsnip
Pork belly & loin, confit potatoes, salted turnips, apple cider jus
Confit duck leg, spelt, black cabbage, heirloom baby beets

MAIN SIDE DISHES \$10 per dish per table

Grains and seed salad, pomegranate, mimosa dressing
Handcut chips, rosemary, garlic
Steamed seasonal greens
Roasted beetroot, chèvre, pine nuts

DESSERT

Dark chocolate mousse, cocoa biscuit, passionfruit sorbet
Tarte citron, meringue, lime gel, cherry textures
Mille-Feuille, caramel, vanilla, marscapone
Mont Blanc, Chantilly, chestnut, cassis sorbet
Gianduja finger, chocolate crisp, chocolate gel, date purée
Forest fruit tea mousse, blackberry, almond biscuit, viola

OR

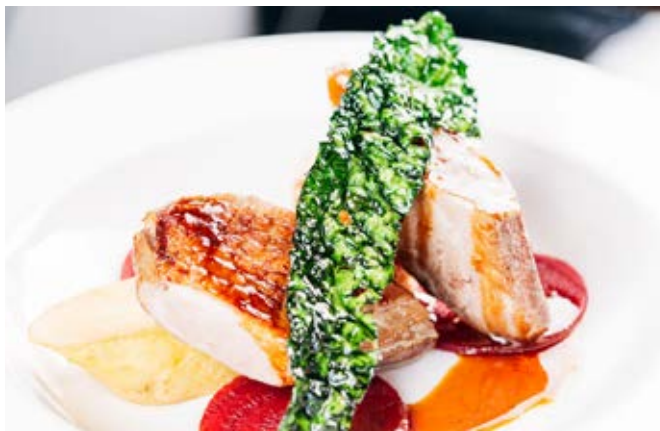
Dessert platters to the table
(3 items per person, chef's selection)

OR

Cheese platters to the table

TO FINISH

Tea, Coffee



GETTING THERE

The Eureka 89 entrance is located on the east side of Eureka Tower near the palm trees at ground floor level. Please enter via the red carpet.

CAR PARKING

Wilson Parking is our preferred partner for car parking and is located at the base of Eureka Tower. Wilson Car Park is accessed from the corner of City Road and Southgate Avenue.

Preferred Eureka Level 89 visitor rates apply when exiting before 6am the following day.

- Monday – Friday (entry before 4pm): \$13*
- Monday – Friday (entry after 4pm): \$ 6*
- Weekends & Public Holidays: \$ 6*

Please ensure that you validate your parking ticket at the Eureka Skydeck Gift Shop when departing before 10pm. Please ensure that you validate your parking ticket at the Eureka Level 89 exit when departing after 10pm.

**Parking rates subject to change*

TAXIS

There is a taxi rank on Riverside Quay adjacent to Eureka Tower.

PUBLIC TRANSPORT

Situated in Southbank set back from Melbourne’s Yarra River, Eureka 89 is an easy walk from the CBD, Federation Square or Crown Casino. Flinders Street train station is an approximate 5 minute walk from Eureka 89. There are also numerous tram and bus routes which drop near to the Southbank area.

